



**Morpheus Control and Monitoring.**

Morpheus Control and Monitoring is the third generation of Pro-Bel's enterprise-wide management application, designed to provide an over-arching command-and-control capability across the entire content production and delivery infrastructure. Allowing complete freedom for creation and customisation of user interfaces for controlling and monitoring Pro-Bel and third party equipment. It integrates control, monitoring, media management, automation and master control as well as allowing flexible alarm reporting, logging and management.



**FEATURES**

- Design user interfaces with all the functionality you need
- Single database for entire system configuration
- Admin control of user rights and screens
- Integrated system wide logging

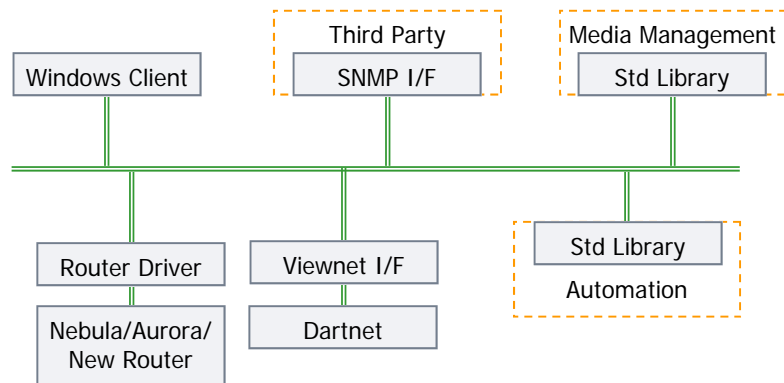
**Interfaces:**

- Modular products
- Router control
- Master control
- Automation
- Media management
- SNMP interfacing
- Third party alarms and monitoring
- Support for third party interfaces



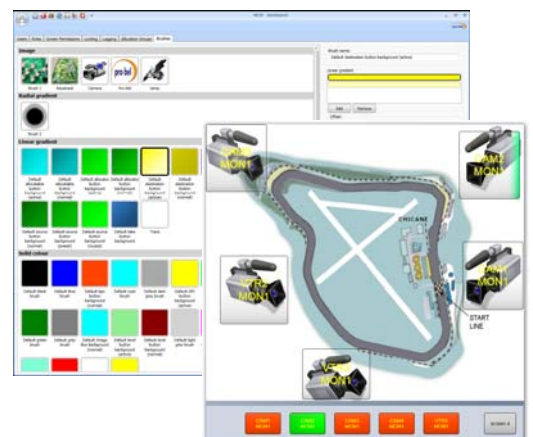
**Network Operation**

Morpheus Control and Monitoring operates in a client server configuration using standard TCP/IP network protocols. Real time, dual redundant embedded controllers provide central interface points for MCM to communicate with and control associated systems. When a user logs onto an MCM workstation by entering a username and password, the workstation will connect to the appropriate servers to provide real time control and monitoring of the systems associated with that users screens. The network protocols are designed to be routable, allowing operation over almost all network topologies, including wide area networks.



**Design Tools**

Morpheus Control and Monitoring provides a powerful design tool that allows screens to literally be drawn for any style of user interface. The designer allows multiple related screens to be created for a single user's logon environment. Every aspect of the user interface can be customised allowing screens to range from clear and functional to more radical designs for the artistically creative.



## Alarms and Monitoring

The alarm and reporting mechanism inside Morpheus Control and Monitoring operates over the multiple screens that may be present in a user's logon environment. This allows a hierarchy of screens that provide high level summaries from which a user can drill down through one or more subsequent screens to determine the route cause of a problem.

## Logging

MCM provides the frame work for complete system-wide logging giving the user a flexible approach to logging and reporting. Full logging of alarms is supported, recording the initial incident, when it was acknowledged, and when the fault condition was cleared.

## System Architecture Designer

The user can use this powerful tool to enter the components of their system and how they are connected. This can be used in a number of ways within the MCM environment; for signal path monitoring diagram, for the foundations of error reporting and system configuration and monitoring.

## Standard Control Feature Set

Standard routing features allow full control of a multi-matrix multi-level routing system.

**Button per Crosspoint.** This simple router control allows a set of buttons to be defined on the user interface that operate as a single panel. Each button press sets a route (or an associated set of routes on multiple levels). Additional features available with the functionality include; protect, level enable/disable, PGM/PST swap.

**XY Control.** This mode of routing allows a destination to be selected then a source, the routing is completed by the pressing of a 'Take' button. Level buttons can enable/disable individual levels during source selection allowing a 'breakaway' association to be built up. Additional features available with this functionality include protect.

**Text Tally.** This simple control displays the source name currently routed to a destination. The control can be operated in conjunction with level buttons to display the tallies on different levels.

**Image Tally.** The image tally control allows different images to be assigned to sources. The image tally displays the image corresponding to the source currently routed to a destination.

**Protect Indicator.** This control displays one of two images depending on whether a destination is currently route protected. The images can be user defined or system defaults.

**Unmarried Indicator.** This control displays one of two images depending on whether a destination has a married source association routed to it. The images can be user defined or system defaults.

## Advanced Router Control

This optional package provides additional router control features not available in the standard router control.

**Tie-Lines.** This option requires MCM to be used in conjunction with an Aurora control system. It allows a source (or source association) on one matrix to be routed to a destination on another matrix using the Aurora tie-line logic. Tallies will be of the upstream source and not intermediate sources. Single, multi-stage, and multiplex tie-lines are supported.

**Salvos.** Salvos allow groups of crosspoint sets to be defined and then recalled in a single operation. Salvos can be created in Procion or in the router control system, either system can recall the others salvos.

**Source Protect (Privacy).** Allows users to lock sources to prevent others from routing the protected source to other destinations.

## Vistek Control & Monitoring

### Virtual Modules

The ability to create panels with controls across multiple hardware modules.

**Live Dynamic routing of Vistek controls using drag & drop technology.**

**Direct control of Dartnet from any Windows PC.**

**Control & Monitoring of an unlimited number of modules.**

WWW.PRO-BEL.COM

UK

+44 (0) 1189 866 123

USA

+1 631 549 5159

France

+33 (0) 1 45 18 39 80

Hong Kong

+ 852 2891 9123

