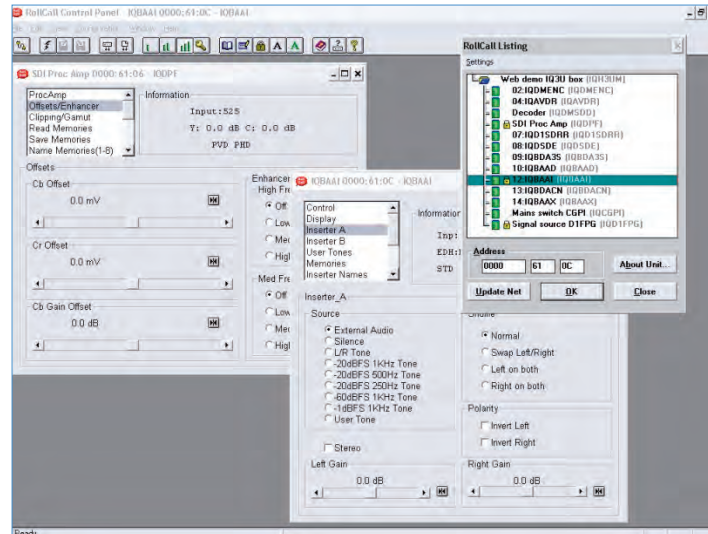


ROLLCALL Control Panel Windows PC Based Configuration & Control

The **ROLLCALL** Control Panel is a PC application enabling remote configuration and control functionality for all RollCall enabled Infrastructure hardware.



Navigating and controlling your infrastructure is made simple using standard 'Windows Explorer' type operations that any user of Windows is familiar with. Whether you have a small control network or multiple geographically separate and potentially unmanned sites, RollCall Control Panel enables access to your entire infrastructure, anywhere, anytime. Included with RollCall control Panel are key features that ease systems installation and maintenance, such as the ability to access User Manuals for the entire IQ Modular product range at the touch of a button within RollCall. Also you can backup the configuration information for your entire system with a single mouse click.

The RollCall Control Panel Package includes 'RollIPM' - TCP/IP connection manager to enable concurrent connection to multiple IP enabled RollCall products. Connection to equipment can be achieved by Ethernet / TCP/IP, RollNet or RS422. Control of Non-Ethernet enabled RollCall products will require either IQCRSAD RS232 to 422 converter, or RollPCI / RollPCM to connect to the RollNet Network.

RollCall Control Panel is available free of charge to all users of Snell & Wilcox infrastructure products. It can be ordered on CD and it is also available for download from the Internet from the following URL:
<http://www.snellwilcox.com/products/rollcall>

The **RollCall** Control Panel is available free of charge to all users of Snell & Wilcox infrastructure products. It can be ordered on CD and it is also available for download from the Internet from the following URL: <http://www.snellwilcox.com/products/rollcall>

Snell & Wilcox Inc.
3519 Pacific Ave.
Burbank, CA 91505
Tel: +1 818 556 2616
Fax: +1 818 556 2626
info@snellamerica.com

Snell & Wilcox Ltd.
Southleigh Park House,
Eastleigh Road, Havant,
Hampshire PO9 2PE, UK
Tel: +44 (0)23 9248 9000
Fax: +44 (0) 23 9245 1411
info@snellwilcox.com

Snell & Wilcox (Hong Kong) Ltd.
Room 603, Tai Tung Building,
No.8 Fleming Road,
Wanchai, Hong Kong
Tel: +852 2356 1660
swhk@snellwilcox.com.hk

Company policy is one of continuous product improvement. Specifications are therefore subject to change without notice.

Snell & Wilcox, Putting Pictures to Work, RollPad and RollCall are trademarks of the Snell & Wilcox Group.
All other trademarks mentioned herein are duly acknowledged.

© 2006 Snell & Wilcox Limited
All Rights Reserved

Does this product suit your application?

- Full remote control of RollCall compatible units from single or multiple PC workstations
- Access hardware configuration and control functions via simple GUI
- Fingertip access for all IQ modular product manuals within RollCall
- Multiple units can be controlled simultaneously for efficiency
- Save and restore configurations to entire RollCall systems from a single location
- Operates through Ethernet / TCP/IP network, RollNet Interface cards (RollPCI or RollPCM) or through an RS422 serial port
- Supports Microsoft Windows XP and Windows 2000

Why should you choose this product?

- Build and integrate your systems with greater efficiency by configuring and controlling from one PC workstation
- Ideal in central operations or engineering location to enable real time control of all RollCall connected systems
- Offers full remote control of all RollCall enabled products from a graphical environment
- Secure access by password or IP address guest lists

Ordering Information

RollCall	RollCall - PC Remote Configuration and Control Software for Microsoft Windows XP & 2000 provided on CD-ROM with on-line documentation. (RollCall is included free of charge with every RollCall enabled product)
Licence	There is no restriction on the number of copies installed of the RollCall Control Panel Application that are installed per system.