

FREEWAY Control



Flexible control with on-line and off-line editing for Freeway routers.



FEATURES

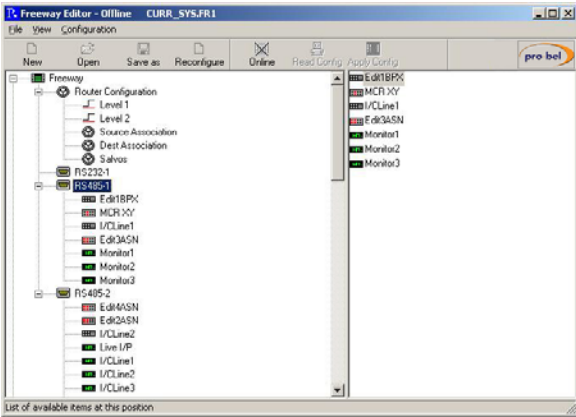
- User friendly GUI
- Controls up to 8 levels of routing
- Controls up to 32 panels and/or under monitor displays
- Optional back-up controller for superior reliability

Control for Freeway routers is provided by a single daughter card fitted on one of the router modules in the 'base' frame. Systems requiring redundant control have the option to fit a back-up controller within the same frame, on a second signal card.

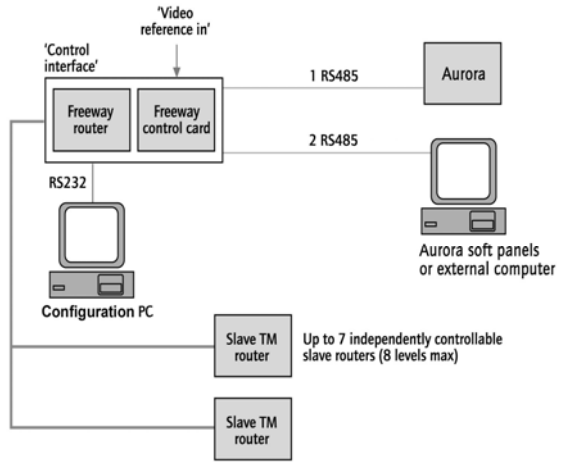
Eight independent routing levels, housed in one 'base' and up to seven 'slave' frames can be controlled by a Freeway controller. Up to 32 devices; either under monitor displays or control panels can be connected to the base frame providing control of the routing system. The control panels can be selected from Pro-Bel's standard range of X-Y, multi-bus and button per crosspoint types.

A user editable database, held in battery backed RAM on the controller, contains system configuration information including source and destination names and associations, route inhibits and audio channel configurations. The intuitive, user friendly, Windows™ based editor, provided with each Freeway system gives access to the database for on-line editing, while even allowing databases to be edited or created off-line.

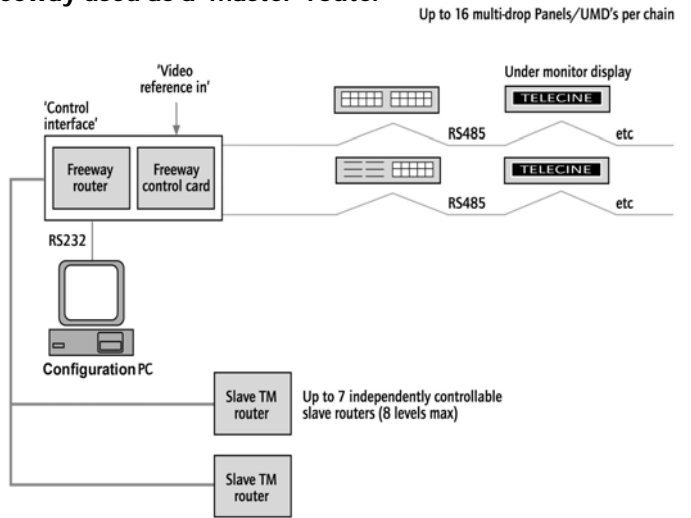
Freeway systems can be set to operate as a 'master' frame as detailed overleaf, or as a standalone router controlled as part of a larger routing system by an independent controller such as the Pro-Bel Aurora. While operating as a master, Freeway can also control TM router levels via a parallel control link cable.



Freeway used as a standalone router



Freeway used as a 'master' router



WWW.PRO-BEL.COM

UK
+44 (0) 1189 866 123

USA
+1 631 549 5159

France
+33 (0) 1 45 18 39 80

Hong Kong
+ 852 2891 9123

