

AURORA

The ultimate flexibility and power to provide control solutions for every routing application.



FEATURES

- Scalable/expandable hardware platform
- Control of up to 20 independent routing switchers each with up to 16 levels of 2048 x 2048
- Single or multi-stage tie line operation
- User definable and editable system database
- Main and backup processor architecture with auto changeover
- Redundant power supplies

Aurora Hardware

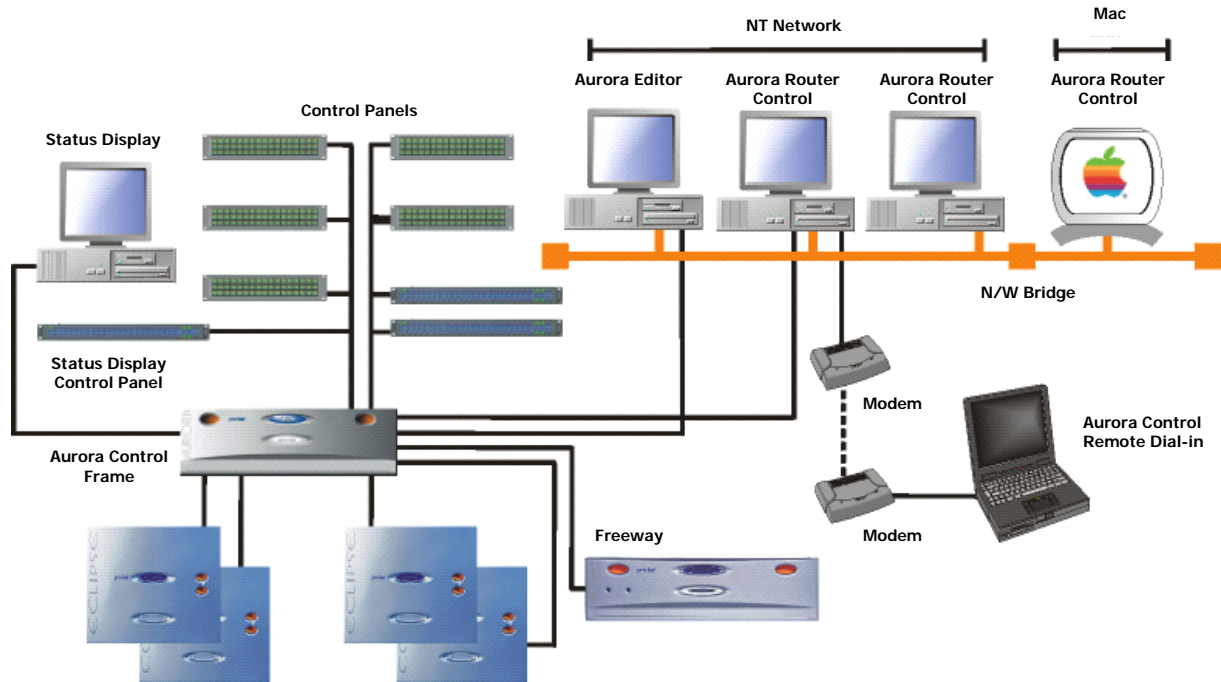
At the heart of the Aurora control system is a 3RU frame housing the main controller. As this controller is PROM based, and retains the system database in battery backed RAM, it does not rely on PCs, fileservers or hard drives during normal operation. By adopting this architecture, fast start up is guaranteed following a system reset or power failure. A user friendly GUI, provided with the controller, offers either on or off-line editing of the system database.

The main frame provides a fixed number of device, and remote matrix ports which may be increased with the addition of expansion frames. The option to fit redundant processors, incorporating automatic changeover, and backup power supplies in every frame ensures total peace of mind.

A single Aurora system has the ability to control up to twenty independent routing switchers, each with up to sixteen levels, and a maximum level size of 2048 x 2048.

Comprehensive single or multi-stage tie line software allows up to 1200 tie lines, and provides the ability to seamlessly interconnect routers either directly, for identical signal types, or via converters where different signal formats exist. System status displays permit the user to view crosspoint settings, tie line use and some system fault information.

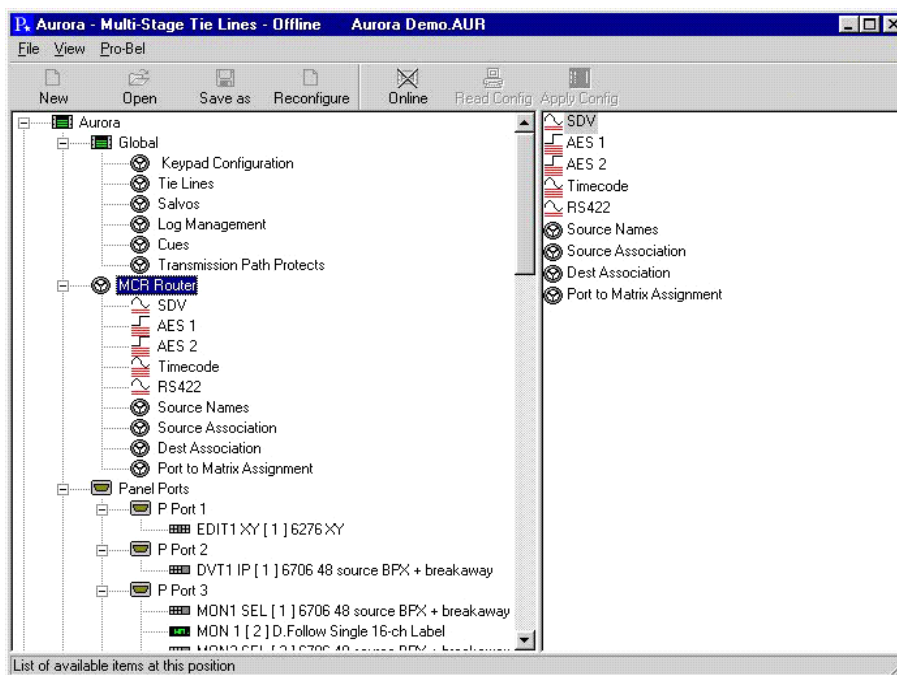
Aurora is compatible with existing Pro-Bel router hardware, control panels and software. Pro-Bel is continually striving to protect the investment in routing and infrastructure systems made by its customers, Aurora is no exception. As router and panel protocols remain unchanged, existing customers can upgrade their controller, migrating control panels and routers to the new platform with minimal downtime. Third party routing equipment can also be interfaced to the controller either directly, if the manufacturer supports our standard protocol, or via a protocol translator. The open architecture of Aurora, and the freely available remote control protocol leaves no doubt that Aurora is automation ready, and can be easily incorporated into existing or new systems.



Aurora Database Editor Software

A user friendly intuitive Windows GUI provides the interface to the system database, presenting an overview of the system configuration in a Windows 'tree' style format. Editing within the database is via 'pop up' forms, providing direct entry fields with cut and paste capability. The extensive use of drag and drop within the database structure makes creating and editing databases easier than ever, while the auto-populate feature adopted with keypad types, speeds up panel definition.

The flexibility of Aurora is extended even further with the ability to edit databases either on or off-line. As the Aurora Windows editor is backward compatible with System 3 controllers, existing users can benefit from this new GUI by replacing their existing System 3 editor.



- Easy to operate Windows GUI
- 'Tree' style view of system configuration
- Drag and drop assign for control devices
- Unique panel entry sequence auto populate feature
- On or off-line database editing
- Save and recall of operation specific databases

Technical Specification

Dimensions	3RU 19" rack frame (w) 483mm (d) 490mm (h) 133mm
Power consumption	35W
Operating voltage	110/220/240V AC +/- 10% Monitoring relays for supply and fan failure

Specifications subject to change

Aurora Hardware Ordering Information

Single Processor	Dual Processor	Single Matrix - No Tielines
AUR-LSN1-11S0	AUR-LDN1-11S0	8 matrix/8 device ports
AUR-LSN2-22S0	AUR-LDN2-22S0	16 matrix/16 device ports
AUR-LSC2-22S0	AUR-LDC2-22S0	16 matrix/16 device ports with cue system
Multi Matrix - No Tielines		
AUR-PSN1-11S0	AUR-PDN1-11S0	8 matrix/8 device ports
AUR-PSN2-22S0	AUR-PDN2-22S0	16 matrix/16 device ports
AUR-PSC2-22S0	AUR-PDC2-22S0	16 matrix/16 device ports with cue system
Multi Matrix - Single Stage Tielines		
AUR-SSN1-11S0	AUR-SDN1-11S0	8 matrix/8 device ports
AUR-SSN2-22S0	AUR-SDN2-22S0	16 matrix/16 device ports
AUR-SSC2-22S0	AUR-SDC2-22S0	16 matrix/16 device ports with cue system
Multi Matrix - Multistage Tielines		
AUR-MSN1-11S0	AUR-MDN1-11S0	8 matrix/8 device ports
AUR-MSN2-22S0	AUR-MDN2-22S0	16 matrix/16 device ports
AUR-MSC2-22S0	AUR-MDC2-22S0	16 matrix/16 device ports with cue system

16 and 32 port expansion frames are available in a number of configurations. Please contact your sales representative.

WWW.PRO-BEL.COM

UK
+44 (0) 1189 866 123

USA
+1 631 549 5159

France
+33 (0) 1 45 18 39 80

Hong Kong
+ 852 2891 9123

