

STANTRON®
AUDIO/VIDEO & BROADCAST

BROADCAST E-RACK

E means Enhanced

E means Easy

E means Extra

E means Efficient

E means Excellent



www.StantronRacks.com

APW MAYVILLE™

Broadcast E-Rack

Versatile Racking Systems

- 3 heights: 40U, 45U, 52U
- 4 depths: 25", 30", 34", 36", 40", 42" – accommodates market trend towards deeper servers!
- 22" overall width accommodates industry standards

Optimal Cable Management

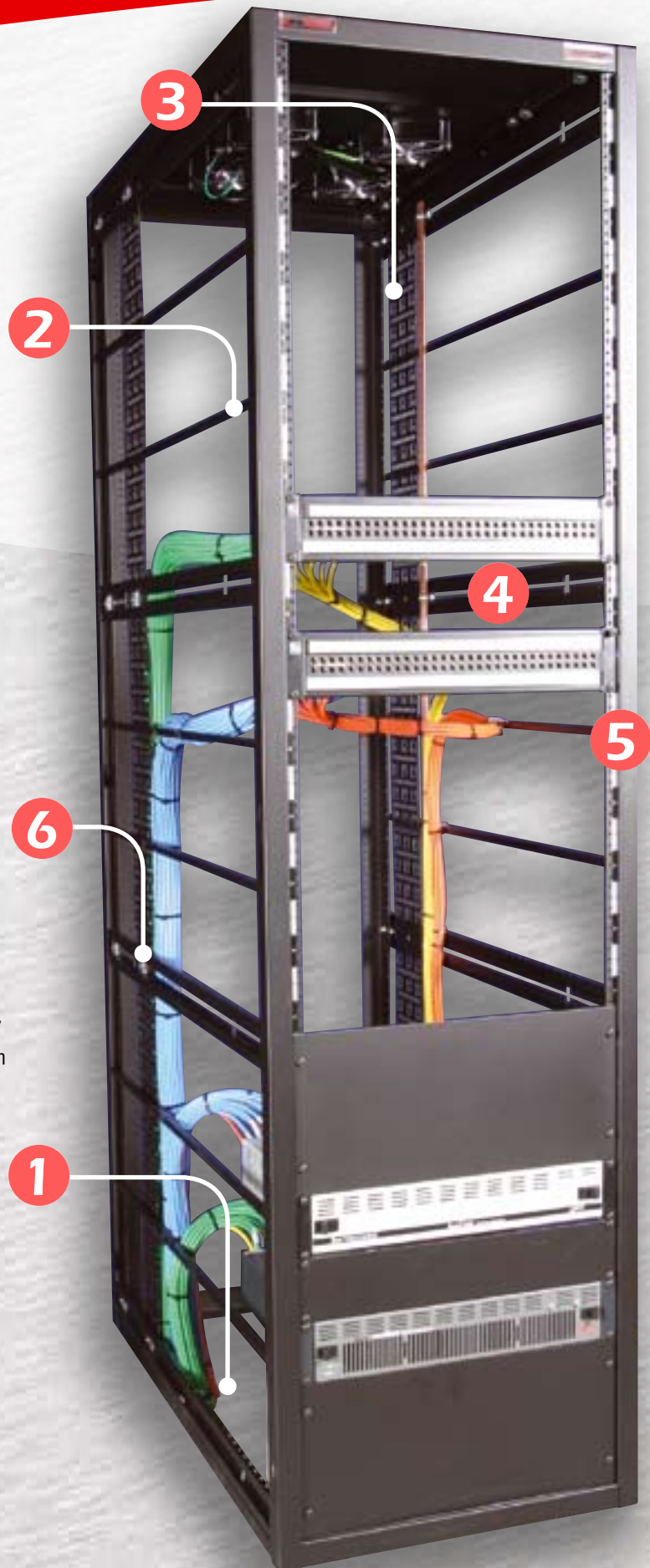
- Installer-friendly lacing bars save time & money on installations
- Easily manages large volumes of cables

Durable, Rugged, and Good Looking

- 14 gauge steel frame
- 12 gauge steel mounting rails
- Fully welded construction provides maximum durability
- Powder coat paint provides a durable, long lasting finish

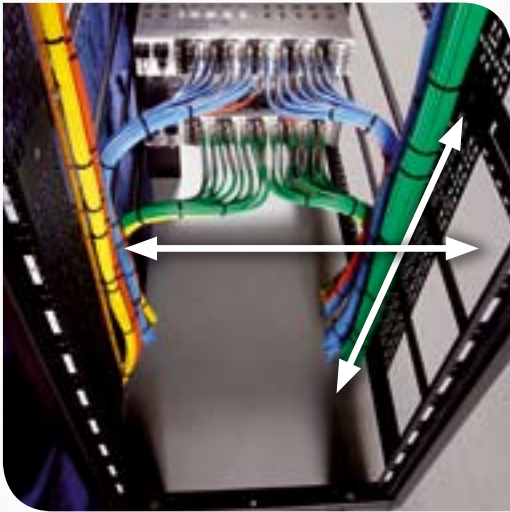
Lifetime Warranty

- Dependable, consistent quality
- ISO 9001 certified



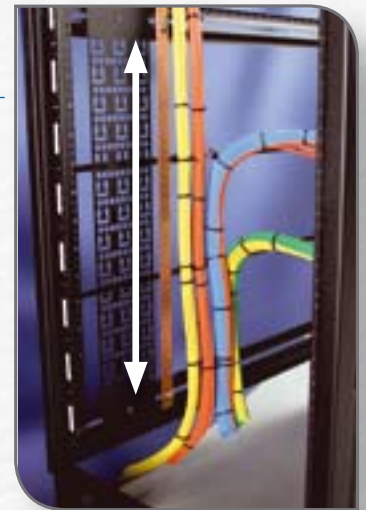
1-800-558-7297
www.StantronRacks.com

Features



1 Open frame design

Straight cable runs top-to-bottom without kinks, bends, or protrusions



2 Multiple Lacing Points

Horizontal lacing bars every 6"

- Supports heavy bundles without stress

Unique rounded edges

- Cables are not damaged or cut when tied to lacing bars

Fully welded design

- Frame is square and stiff

Horizontal mounting channels have oblong holes*

- Convenient lacing points everywhere!



3 Easy to Use Lacing Plates (Optional)

Convenient mushroom-head design

- Allows quick & easy installation of pre-bundled cables

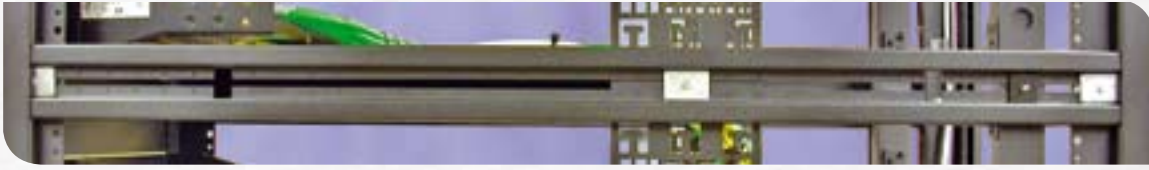
Industry standard square holes

- Provides neat tie-off points
- Accepts standard cage nuts

1-800-558-7297
www.StantronRacks.com

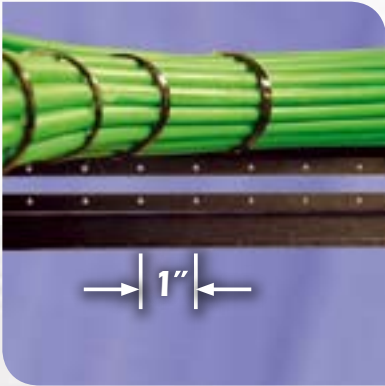
*Patent pending

4 Rigid Horizontal Mounting Channels



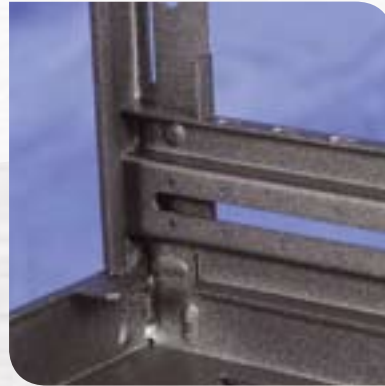
Low profile – slim and compact

- More open space for running cables rack-to-rack
- Profile optimized for best functionality and highest stiffness with smallest cross-section
- Easy access for technicians & installers



Calibrated marks along length of all mounting channels*

- Provides assistance in lining up vertical rails
- Pin holes at 1" increments along all four mounting channels make vertical alignment quick & easy



4 horizontal mounting channels welded into frame

- Provides additional frame strength
- Frame is square and stiff
- Allows mounting of half-height vertical components

5 Convenient Vertical Mounting Rails



Extra holes on inside of mounting rails

- Extra tie-off points along rack rails
- Helps to dress loose cables



RU labels

- Easy to read RU labels save installation time

6 Extra Features Make The Difference



Side panels

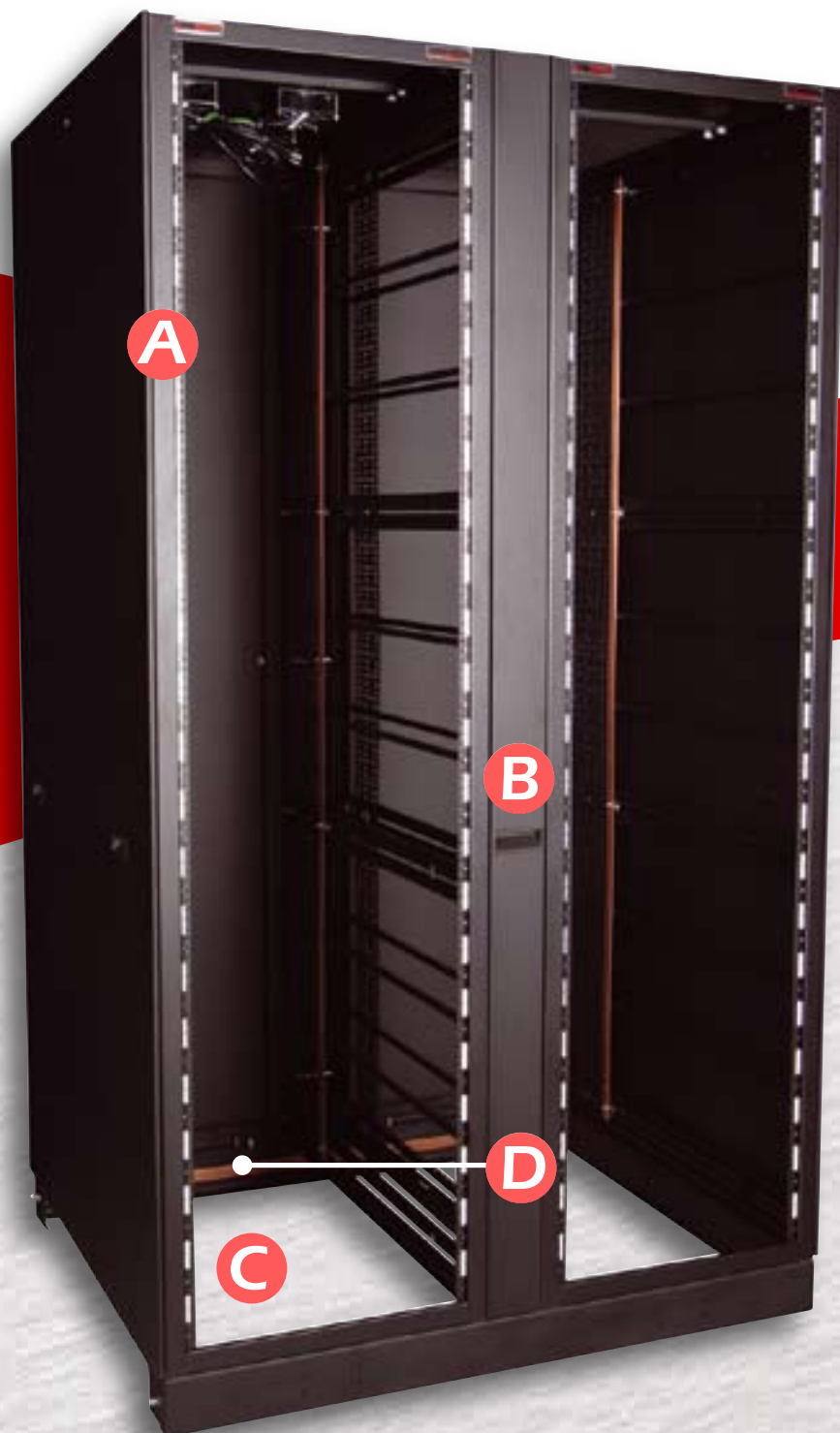
- Easy to remove, easy to install
- Available in multiple styles
- Durable and lockable for added security



Solid steel nut plates

- Full threads won't strip
- Allows solid bolting of accessories

Multiple Bays with Cable Chase



—Designed with
Time-Saving Features
for Quick & Easy
Installation!

The Most Modular Rack in the Industry

- Stantron's Broadcast E-Rack allows you to configure your own rack system
- Quick release side panels save on installation time
- Our easy-to-order kits offer a configured solution with one part number
- Reversible doors
- Optional top panels

Cost Effective!

- Versatility, functionality, and durability at an attractive price!
- Call us for more details...

Lifetime Warranty

Features



A Sleek, Flush-Mount Doors

Sleek, flush mount design

- Looks great!

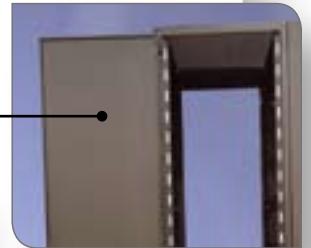
Rotate 180 degrees

- Perfect for space constrained situations and narrow aisles

Low profile door handles & locks

14 gauge steel

- Solid construction



B Super-Easy Cable Chase

Easy to install

- Saves valuable installation time, easy to work with

Multiple widths

- Provides plenty of cable space for any installation

Easy on / easy off front cover with unique pull-up motion

- Provides quick, easy access to cables between racks
- Easy lift-out panel handle



C Feature-Rich Base (Optional)

1-5 bay bases

- Multiple configurations

Convenient knockouts for power receptacle

Open sided bases for multi bay configurations

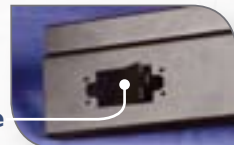
- Allows installer to run cable under racks without interruption

4" high

- Maximum space for large volumes of cables

Riser feet

- Available in a variety of heights for raised floors
- Provides needed height for non-raised floors and large volumes of cables
- Includes assorted shims for easy leveling



D Rear Ground Bar (Optional)

Optional rear ground bar attachment